

A photograph of a man in a light blue jacket and dark pants standing on an airfield in front of a large P-3 aircraft. The aircraft is white with dark blue accents and has various instruments and sensors mounted on its fuselage. The background shows a clear sky and some ground equipment.

NTU-MESO/P3 Lab

研究重點：臺灣災害性天氣中 尺度過程

指導老師：周仲島教授

國立台灣大學大氣科學系中尺度P3研究室

20 January 2014

Scientific interests

1. Monsoon season, Meiyu season, approaching frontal system, embedded mesoscale convective systems, heavy rainfall events, big disasters associated with flood and land slide, hazard mitigation.
2. Typhoons, especially landfalling typhoons, terrain effects on changes of track, intensity, and wind and rain distributions.
3. Severe local storms, mountain-generated organized multicellular storms, hail storms, tornadoes, and others.
4. QPF and QPE, hazard mitigation technology development, forecasting and monitoring technology development

綠島中尺度實驗 (2001, NSC), GIMEX
東亞中尺度系集預報系統 (2001, CWB+ WRA),
MEFSEA

環島都卜勒雷達網聯 (2002 CWB+ WRA),
QPESUMS

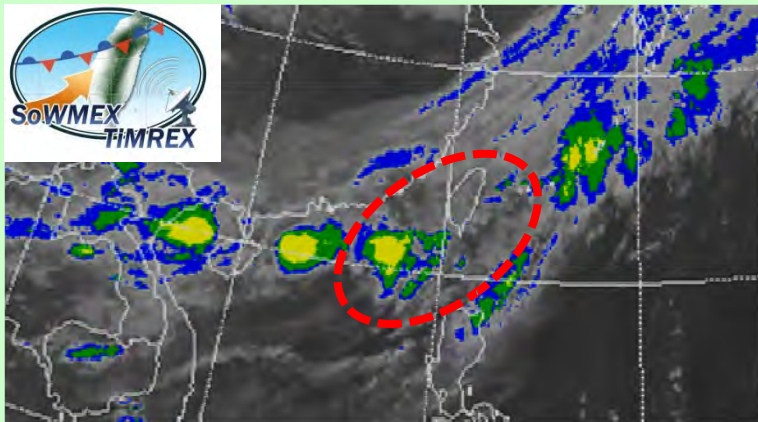
機載投落送計畫 (2003 NSC+CWB), DOTSTAR

福爾摩沙三號衛星 (2005 NSC+NSPO),
FOMOSAT III/COSMIC-GPS

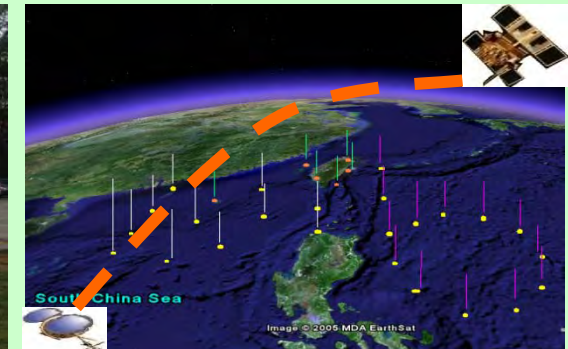
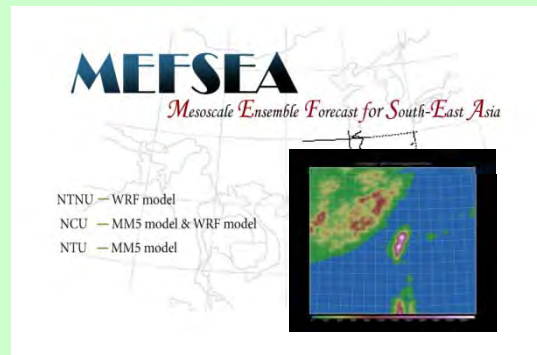
車載X波段雙偏極雷達 (2006 NSC), TEAM_R

西南氣流實驗 (2008 NSC+ CWB+
NSF-NCAR), SoWMEX/
TiMREX

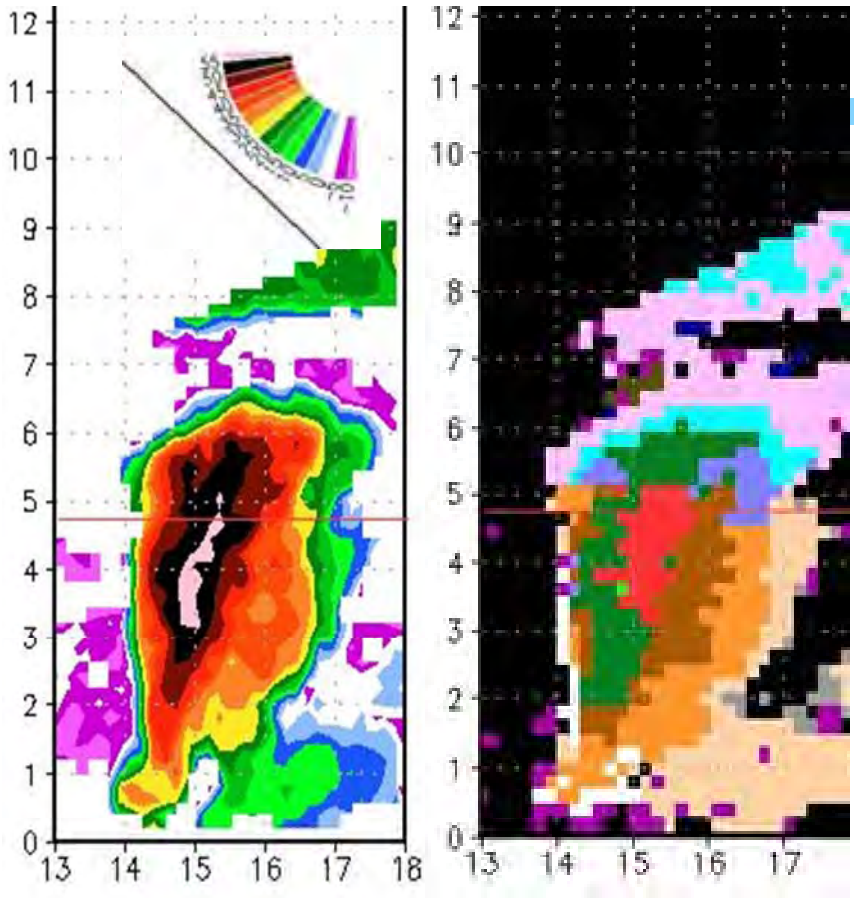
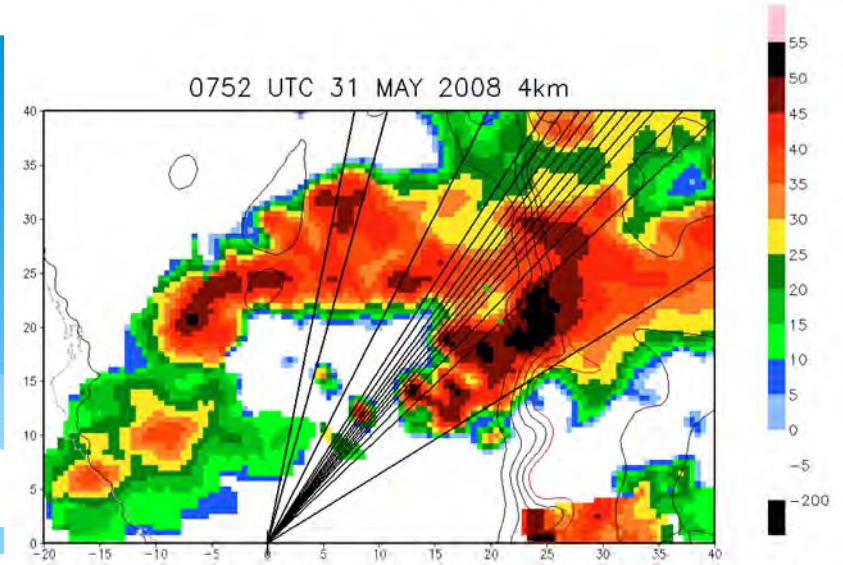
山區降雨量測計畫 (2014-, 南高屏地
區) NTU VPR + NCU TEAMr
+ CAFWW/TTFRI-CPOLs +
CWB QPESUMS



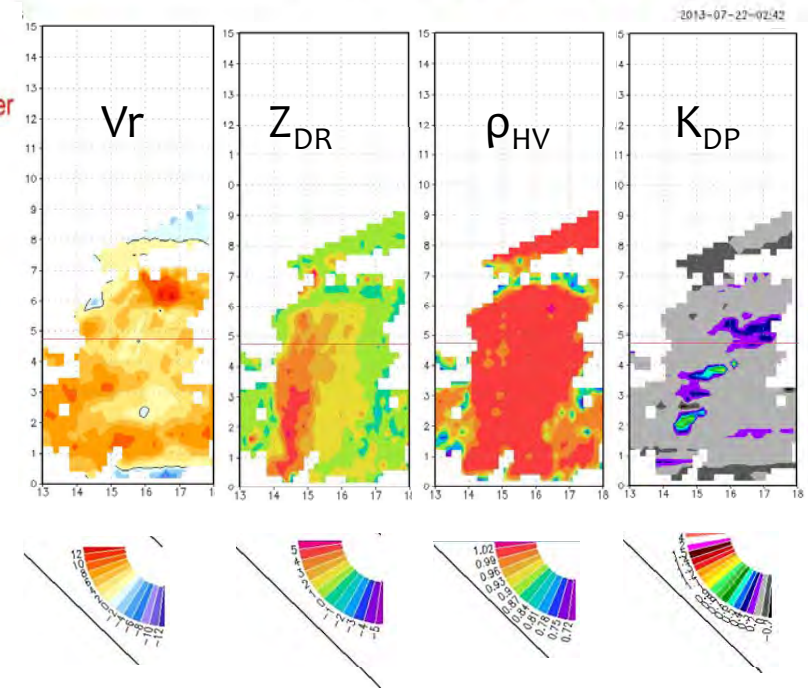
台灣天氣研究計畫 (2000-2016) (Taiwan Weather
Research Program): by advancing our theoretical,
observational, and modeling capacity in order to
improve high impact weather prediction accuracy.



system in south Taiwan (1552 LST, 31 May 2008, RHI-38 degree), graupel/rain mixture at low levels



- clutter
- second trip
- insects
- no supercooled water
- irregular ice crystal
- ice crystal
- wet snow
- dry snow
- graupel/rain
- graupel/small hail
- rain/hail
- hail
- heavy rain
- middle rain
- light rain
- drizzle
- cloud
- nothing



Raindrop size vs ZDR: 2.7mm (1.5dB); 3.45mm (2.0dB); 5.30mm (3.6dB); 5.8mm (4.0dB); 7.35mm (5.5dB)

臺灣天氣雷達一覽圖

Taiwan Doppler Radar Network Update (2014)

- CWB, 4 S-band Doppler radars
- Air-Force, 3 C-band Doppler radars with two of them are quasi-polarized;
- CAA, 1 C-band Doppler radar;
- NTU, 1 S-band VPR
- NCU, 1 C-band and 1 mobile x-band (TEAM-R) polarimetric radar
- WRA+CWB, 5 C-band polarimetric radars (new)

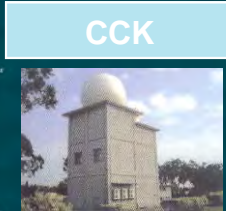


TTFRI
CPOL

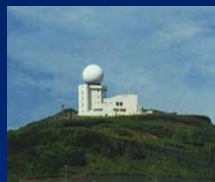


NTU-
VPR

CAA



CCK

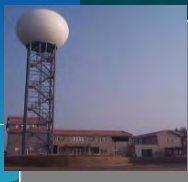


RCWF



RCHL

MKO



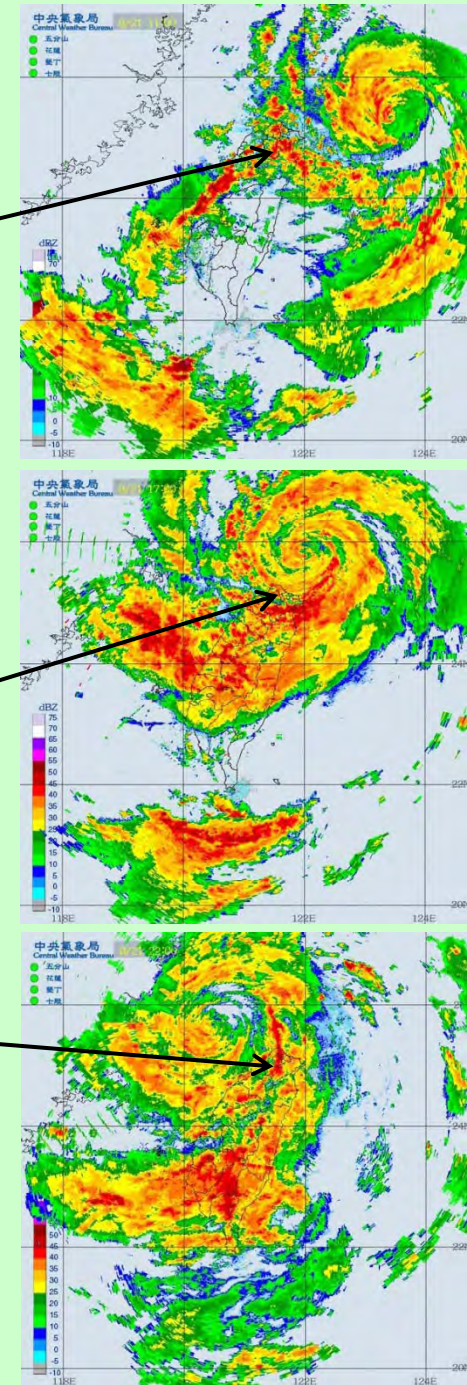
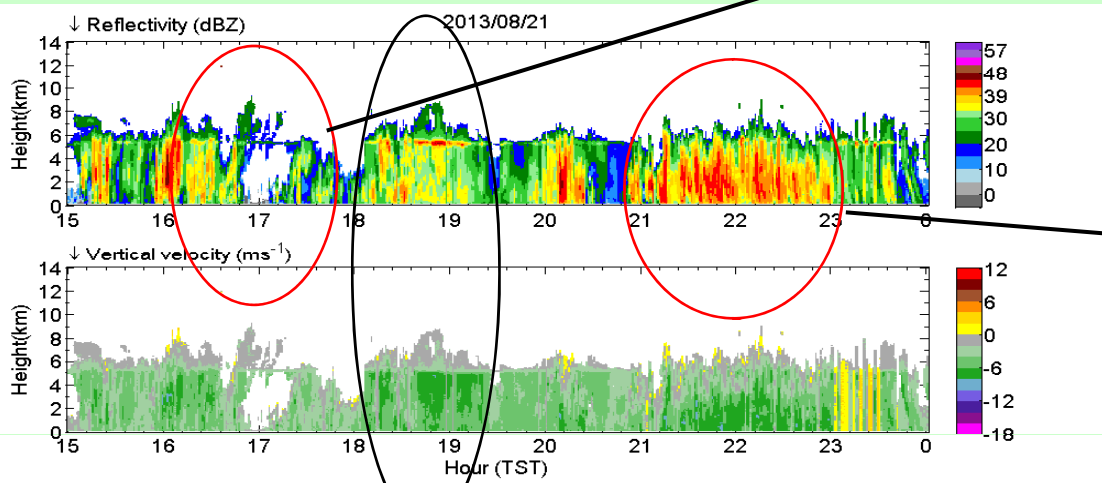
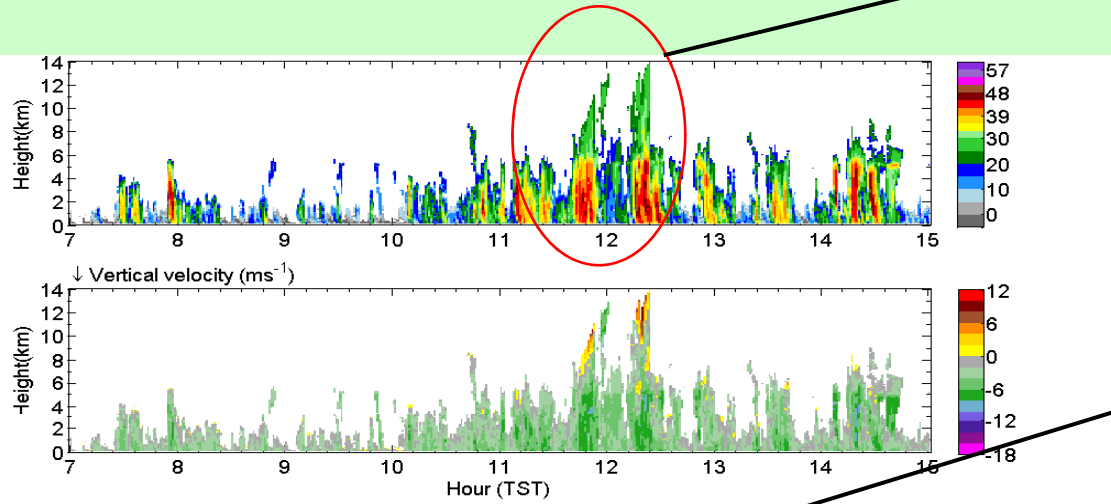
RCCG

GI

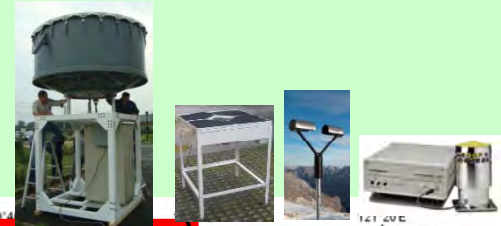
RCKT



Vertically-pointing radar observations of typhoon Trami rainband characteristics, 21 August 2013



2014山區降雨量測實驗:高雄楠梓仙溪小林村水庫進水量>>雨量站量測雨量總值



Doppler radar



Polarimetric radar



Rawinsonde

Rain profiler
Disdrometer

Mountain precipitation measurement experiment

